

Corno 2 – seconda parte “A”

Otto SCHWARZ

Cape Horn for horn and concert band

Gioachino ROSSINI

La gazza ladra (dall’inizio fino ad Allegro con brio escluso)

Il Barbiere di Siviglia (da n. 8 a n. 9 escluso)

Philip SPARKE

Fiesta! (dall’inizio fino a lettera Q esclusa)

SOLO F HORN

CAPE HORN

for Horn and Concert Band

Otto M. Schwarz

Allegro

27

mf

f

45

(3+2)

54 Poco meno mosso

p

mf *f*

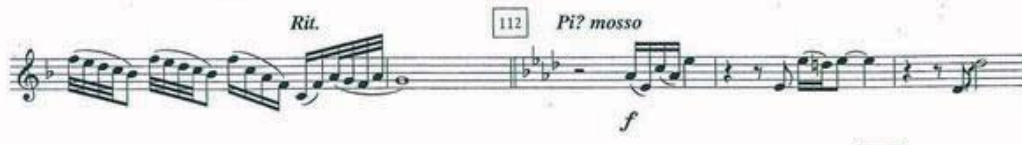
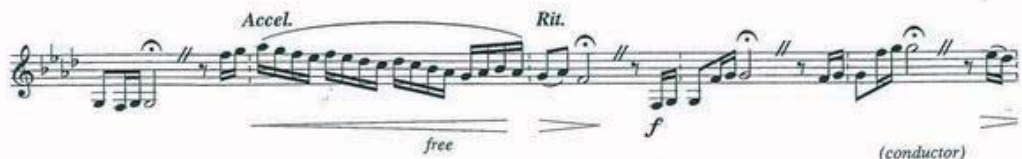
63

fp *f*

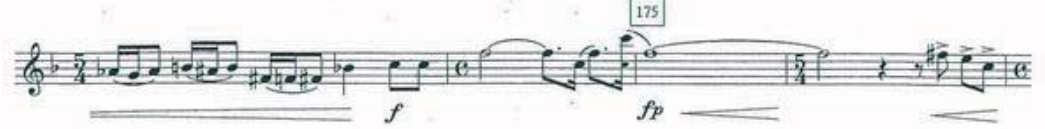
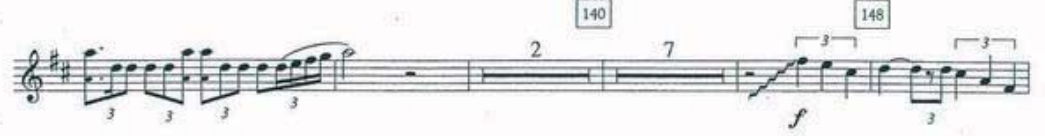
Poco a poco rit.



79 **Lento - Elegy (free in time)**
4" 8" *free in time (elegiac)* (conductor) *Rit.* *free*



124 **Allegro**



CONCERT BAND

GRADE 4

S O L O C O L L E C T I O N

CAPE HORN

for Horn and Concert Band

Otto M. Schwarz

Mitropa music

CONCERT BAND

GRADE 4

CAPE HORN

for Horn and Concert Band

Otto M. Schwarz

© Copyright 2008 by Mitropa Music
P.O. Box 60, CH-6332 Hagendorn, Switzerland

1561-08 M - Cape Horn - Otto M. Schwarz

All rights reserved. No part of this publication may be reproduced in any form, by print, photocopy, microfilm or any other means without written permission of the publisher.

Alle rechten voorbehouden. Niets van deze uitgave mag worden vervoelvoudigd en/of openbaar gemaakt door middel van druk, fotokopie, microfilm of op welke andere wijze dan ook zonder voorafgaande schriftelijke toestemming van de uitgever.

Alle Rechte vorbehalten. Vervielfältigung und/oder Veröffentlichung dieser Ausgabe, auch einzelner Teile, mittels Druck, Fotokopie, Mikrofilm etc. ohne schriftliche Einwilligung des Herausgebers verboten.

Tous droits réservés pour tous pays. Aucune partie de cette édition ne peut être reproduite sous aucune forme : imprimée, photocopiée, microfilmée ou par tout autre moyen sans l'autorisation de l'éditeur.

Tutti i diritti riservati. Nessuna parte di questa edizione può essere riprodotta sotto alcuna forma, stampata, fotocopiata, microfilmata, etc., senza l'autorizzazione scritta dell'editore.

Printed in the EU

Cape Horn - Otto M. Schwarz (* 1967 Austria)

Cape Horn is situated at the southern point of South America, on the Chilean island "Isla Hornos". For centuries, sailing around the horn was said to be one of the most dangerous passages for ships that wanted to sail from the Atlantic Ocean westwards to the Pacific Ocean. Tradition has it that Sir Francis Drake discovered Cape Horn in 1578 and the Dutch voyager Willem Cornelisz Schouten was the first to round it in 1616. It was the latter who named the promontory after his Dutch hometown Hooorn. It is estimated that over 300 ships and 10,000 men in total sank into the icy waters during attempts to circumnavigate the cape.

The work *Cape Horn* – a solo for Horn and concert band – attempts to reflect the beauty, but also the peril of this region. It is a matter of great importance to the composer Otto M. Schwarz to write new repertoire in the wind band solo works genre. The tonal language of his main genre – film music – is as unmistakable as the experimental parts and catchy tunes.

DEUTSCH

Das Kap Hoorn befindet sich an der Südspitze Südamerikas, auf der chilenischen Insel „Isla Hornos“. Jahrhunderte lang galt die Umrundung dieses Felsens als eine der gefährlichsten Schifffahrtsrouten, wollte man vom Atlantik westwärts in den Pazifik gelangen. Nach Überlieferungen soll Sir Francis Drake 1578 Kap Hoorn entdeckt und der holländische Seefahrer Willem Cornelisz Schouten 1616 es erstmals umsegelt haben. Dieser gab dem Massiv auch den Namen seiner holländischen Heimatstadt Hooorn. Nach Schätzungen sollen über 300 Schiffe mit 10000 Mann Besatzung bei der Umsegelung in den eisigen Fluten untergegangen sein.

Das Stück *Cape Horn* – ein Solo für Horn und Blasorchester – soll die Schönheit, aber auch die Gefährlichkeit dieser Gegend darstellen. Für den Komponisten Otto M. Schwarz ist es ein Anliegen, neue Solowerke für Blasorchester zu schreiben. Die Tonsprache seines Hauptgenres Filmmusik ist dabei genauso wenig zu überhören wie experimentelle Teile und Ohrwürmer.

FRAANÇAIS

Le cap Horn est le point le plus austral des terres rattachées à l'Amérique du Sud. Cap promontoire, il est situé sur l'île Horn dans le sud du Chili. Pendant de nombreuses années, le cap Horn a été l'un des passages les plus dangereux au monde pour les navires voulant transiter de l'océan Atlantique au Pacifique à l'ouest. Si la découverte du cap est communément attribuée à l'Anglais Sir Francis Drake, qui découvre ce passage en 1578 au cours de sa circumnavigation, le navigateur néerlandais Willem Cornelisz Schouten fut le premier à franchir le cap Horn (Kaap Hoorn) en 1616, qu'il baptisa ainsi d'après son lieu de naissance, la ville de Hooorn aux Pays-Bas. Le cap Horn a la réputation d'être un cimetière marin. Plus de 300 navires et 10 000 hommes ont disparu dans les eaux glacées au moment de « doubler » le cap.

Cape Horn (Le cap Horn) est une œuvre pour Cor solo et Orchestre d'Harmonie. La musique reflète la beauté et les dangers de cette région. Animé par un esprit de curiosité et soucieux d'élargir le répertoire pour instrument soliste et Orchestre d'Harmonie, Otto M. Schwarz développe des passerelles entre les styles et les genres. La musique de film est l'expression musicale de prédilection du compositeur. L'esthétique, les parties expérimentales et les lignes mélodiques palpitantes sont parfaitement caractéristiques de l'écriture du compositeur.

NEDERLANDS

Kaap Hoorn is de zuidelijkste punt van Zuid-Amerika, gelegen op het Chileense eiland Isla Hornos. Eeuwenlang gold de zeiltocht om Kaap Hoorn – van de Atlantische Oceaan westwaarts naar de Grote Oceaan – als een van de gevaarlijkste passages ter wereld. Naar verluidt ontdekte Sir Francis Drake de kaap al in 1578; de Nederlander Willem Cornelisz Schouten was de eerste die eromheen voer – in 1616. Staatstgenoemde gaf de kaap de naam van zijn Nederlandse geboorteplaats. Naar schatting zijn in de loop der tijd meer dan achthonderd schepen met in totaal tienduizend man aan boord door de ijzig koude golven verzwolgen tijdens pogingen om rond de kaap te varen.

Het werk *Cape Horn* – een solowerk voor hoorn en harmonieorkest – weerspiegelt de schoonheid, maar ook het gevaar van dit gebied. De componist Otto M. Schwarz vindt het belangrijk om nieuwe solowerken voor harmonieorkest te schrijven. Het klankidoom van zijn hoofdgenre (filmmusiek) is onmiskenbaar aanwezig, evenals experimentele elementen en aanstekelijke melodieën.

For information about Otto M. Schwarz, please visit our distributor's website: www.dehaske.com

Informationen über Otto M. Schwarz finden Sie auf der Website unseres Vertriebspartners: www.dehaske.com

Pour tout renseignement sur Otto M. Schwarz, consultez le site de notre distributeur partenaire : www.dehaske.com

Informatie over Otto M. Schwarz vindt u op de website van onze distributeur: www.dehaske.com

CAPE HORN

Otto M. Schwarz

Besetzung / Instrumentation
Blasorchester / Concert Band

| | | |
|------------------------|---|-------------------------|
| Partitur | 1 | Full Score |
| Solo Horn F | 1 | Solo F Horn |
| Pikkolo (3. Flöte) | 1 | Piccolo (Flute 3) |
| 1. Flöte | 2 | Flute 1 |
| 2. Flöte | 2 | Flute 2 |
| Oboe | 2 | Oboe |
| Fagott | 2 | Bassoon |
| Klarinette Es | 1 | B♭ Clarinet |
| 1. Klarinette B | 5 | B♭ Clarinet 1 |
| 2. Klarinette B | 5 | B♭ Clarinet 2 |
| 3. Klarinette B | 5 | B♭ Clarinet 3 |
| Altklarinette Es | 1 | B♭ Alto Clarinet |
| Bassklarinetten B | 1 | B♭ Bass Clarinet |
| 1. Alt-Saxophon Es | 1 | B♭ Alto Saxophone 1 |
| 2. Alt-Saxophon Es | 1 | B♭ Alto Saxophone 2 |
| Tenor-Saxophon B | 2 | B♭ Tenor Saxophone |
| Bariton-Saxophon Es | 1 | B♭ Baritone Saxophone |
| 1. Trompete B | 2 | B♭ Trumpet 1 |
| 2. Trompete B | 2 | B♭ Trumpet 2 |
| 3. Trompete B | 2 | B♭ Trumpet 3 |
| 1. - 2. Horn F | 2 | F Horn 1, 2 |
| 3. - 4. Horn F | 2 | F Horn 3, 4 |
| 1. Posaune | 2 | Trombone 1 |
| 2. Posaune | 2 | Trombone 2 |
| 3. Posaune | 2 | Trombone 3 |
| Bariton | 2 | Euphonium |
| Bariton B ♩ | 2 | B♭ Euphonium ♩ |
| Bass | 4 | Tuba |
| Kontrabass | 1 | Double Bass |
| Stabspiele | 1 | Mallet Percussion |
| Pauken | 1 | Timpani |
| Schlagzeug 1 | 2 | Percussion 1 |
| Schlagzeug 2 | 2 | Percussion 2 |
| Keyboard / Synthesizer | 1 | Keyboard / Synthesizer |

Zusätzliche Stimmen für bestimmte Länder / Additional parts for certain countries:

| | | |
|-------------------------|---|--------------------------|
| 1. - 2. Horn Es | 2 | B♭ Horn 1, 2 |
| 3. - 4. Horn Es | 2 | B♭ Horn 3, 4 |
| 1. Posaune B ♩ | 1 | B♭ Trombone 1 ♩ |
| 1. Posaune B ♩ | 1 | B♭ Trombone 1 ♩ |
| 2. Posaune B ♩ | 1 | B♭ Trombone 2 ♩ |
| 2. Posaune B ♩ | 1 | B♭ Trombone 2 ♩ |
| 3. Posaune B ♩ | 1 | B♭ Trombone 3 ♩ |
| 3. Posaune B ♩ | 1 | B♭ Trombone 3 ♩ |
| Bariton B ♩ | 2 | B♭ Euphonium ♩ |
| Bariton B ♩ | 2 | B♭ Euphonium ♩ |
| Bass Es ♩ | 2 | B♭ Tuba ♩ |
| Bass Es ♩ | 2 | B♭ Tuba ♩ |
| Bass B ♩ | 2 | B♭ Tuba ♩ |
| Bass B ♩ | 2 | B♭ Tuba ♩ |



Im Auftrag des 1. Oberösterreichischen Hornfestivals (A)

CAPE HORN

for Horn and Concert Band

Otto M. Schwarz

Allegro (♩ = 120)

The score is arranged in a standard orchestral format with the following parts from top to bottom:

- Solo F Horn
- Flute (Flute 2)
- Flute 1, 2
- Oboe
- Clarinet
- B♭ Clarinet 1
- B♭ Clarinet 2
- B♭ Clarinet 3
- Alto Clarinet
- Bass Clarinet
- Bassoon
- Alto Saxophone 1
- B♭ Alto Saxophone 2
- Tenor Saxophone
- Baritone Saxophone
- Allegro (♩ = 120)
- Trumpet 1
- Trumpet 2
- Trumpet 3
- F Horn 1, 2
- Horn 3, 4
- Trombone 1
- Trombone 2
- Trombone 3
- Euphonium
- Tuba
- Double Bass
- Fuller Percussion
- Timpani
- Percussion 1
- Percussion 2
- Keyboard, synthesizer

Performance markings include "Always look ahead" above the Percussion 1 staff and "Keep Cycle" below the Percussion 2 staff. The score is divided into four measures, numbered 1, 2, 3, and 4 at the bottom.

1

Solo F Hn.

Picc. (Fl. 3)

Fl. 1, 2

Ob.

B♭ Clar.

B♭ Clar. 1

B♭ Clar. 2

B♭ Clar. 3

B♭ A. Clar.

B♭ B♭ Clar.

Bsn.

B♭ A. Sax. 1

B♭ A. Sax. 2

B♭ T. Sax.

B♭ B. Sax.

B♭ Tpt. 1

B♭ Tpt. 2

B♭ Tpt. 3

F Hn. 1, 2

F Hn. 3, 4

Tbn. 1

Tbn. 2

Tbn. 3

Euph.

Tuba

Db. Bb.

Mall. Perc.

Trmp.

Perc. 1

Perc. 2

Keyb. / Synth.

Epstein Music - Clear Lake

5

6

7

8

9

Solo Flute

Perc. (Fl. 3)

Fl. 1, 2

Ob.

Bb Clar.

Bb Clar. 1

Bb Clar. 2

Bb Clar. 3

Bb A. Clar.

Bb Bb. Clar.

Bsn.

Bb A. Sax. 1

Bb A. Sax. 2

Bb T. Sax.

Bb B. Sax.

Bb Trp. 1

Bb Trp. 2

Bb Trp. 3

F Ho. 1, 2

F Ho. 3, 4

Tbn. 1

Tbn. 2

Tbn. 3

Euph.

Tuba

Db. Bb.

Mall. Perc.

Tom.

Perc. 1

Perc. 2

Keyb. / Synth.

10 11 12 13 14

Solo Flute
Picc. (Fl. 3)
Fl. 1, 2
Ob.
B♭ Clar.
B♭ Clar. 1
B♭ Clar. 2
B♭ Clar. 3
B♭ A. Clar.
B♭ B♭ Clar.
Bsn.
B♭ A. Sax. 1
B♭ A. Sax. 2
B♭ T. Sax.
B♭ B. Sax.
B♭ Tpc. 1
B♭ Tpc. 2
B♭ Tpc. 3
FHo. 1, 2
FHo. 3, 4
Trn. 1
Trn. 2
Trn. 3
Euph.
Tuba
Db. Bn.
Mall. Perc.
Timp.
Perc. 1
Perc. 2
Keyb. / Synth.

Key: C Major

Tempo: Adagio

13 14 15 16

11

Solo Fltn.

Picc. (Fl. 3)

Fl. 1, 2

Ob.

B♭ Clar.

B♭ Clar. 1

B♭ Clar. 2

B♭ Clar. 3

B♭ A. Clar.

B♭ Bb. Clar.

Bsn.

B♭ A. Sax. 1

B♭ A. Sax. 2

B♭ T. Sax.

B♭ B. Sax.

B♭ Tpt. 1

B♭ Tpt. 2

B♭ Tpt. 3

F Hrn. 1, 2

F Hrn. 3, 4

Trn. 1

Trn. 2

Trn. 3

Euph.

Tuba

Db. Bn.

Mall. Perc.

Timp.

Perc. 1

Perc. 2

Keyb. / Synth.

Solo Flute

Picc. (Fl. 3)

Fl. 1, 2

Ob.

B♭ Clar.

B♭ Clar. 1

B♭ Clar. 2

B♭ Clar. 3

B♭ A. Clar.

B♭ B♭ Clar.

Sax.

B♭ A. Sax. 1

B♭ A. Sax. 2

B♭ T. Sax.

B♭ B. Sax.

B♭ Tpt. 1

B♭ Tpt. 2

B♭ Tpt. 3

F Hrn. 1, 2

F Hrn. 3, 4

Trn. 1

Trn. 2

Trn. 3

Euph.

Tuba

Db. Dr.

Mull. Perc.

Temp.

Perc. 1

Perc. 2

Keyb. / Synth.

Solo Flute
Picc. (Fl. 3)
Fl. 1, 2
Ob.
Bb Clar.
Bb Clar. 1
Bb Clar. 2
Bb Clar. 3
Bb A. Clar.
Bb Bb Clar.
Bsn.
Bb A. Sax. 1
Bb A. Sax. 2
Bb T. Sax.
Bb B. Sax.
Bb Tpt. 1
Bb Tpt. 2
Bb Tpt. 3
FHo. 1, 2
FHo. 3, 4
Tbn. 1
Tbn. 2
Tbn. 3
Euph.
Tuba
Db. Bb.
Mall. Perc.
Timp.
Perc. 1
Perc. 2
Keyb. / Synth.

Solo Flute

Picc. (Fl. 3)

Fl. 1, 2

Ob.

B♭ Clar.

B♭ Clar. 1

B♭ Clar. 2

B♭ Clar. 3

B♭ A. Clar.

B♭ B♭ Clar.

Bassoon

B♭ A. Sax. 1

B♭ A. Sax. 2

B♭ T. Sax.

B♭ B. Sax.

B♭ Tpt. 1

B♭ Tpt. 2

B♭ Tpt. 3

F Hrn. 1, 2

F Hrn. 3, 4

Tbn. 1

Tbn. 2

Tbn. 3

Euph.

Tuba

Dr. Dr.

Mult. Perc.

Temp.

Perc. 1

Perc. 2

Keyb. / Synth.

The musical score for page 12 is arranged in a standard orchestral format. It begins with a Solo Flute part, followed by Piccolo (Flute 3), Flutes 1 and 2, Oboe, and various Clarinet parts (B♭, B♭ A., and B♭ B♭). The woodwind section continues with Bassoon, Saxophone parts (B♭ A., B♭ T., B♭ B.), and Trumpet parts (B♭ Tpt. 1, 2, 3). The brass section includes Horns (F Hrn. 1, 2 and 3, 4), Trombones (Tbn. 1, 2, 3), Euphonium, and Tuba. The percussion section features Drums (Dr. Dr.), Multiple Percussion (Mult. Perc.), and two sets of Percussion (Perc. 1 and 2). The score concludes with Keyboard/Synth. The page is numbered 12 at the top center and has measure numbers 24, 25, 26, 27, and 28 at the bottom.

Solo F Hn.

Picc. (Fl. 3)

Fl. 1, 2

Ob.

B♭ Clar.

B♭ Clar. 1

B♭ Clar. 2

B♭ Clar. 3

B♭ A. Clar.

B♭ B♭ Clar.

Bsn.

B♭ A. Sax. 1

B♭ A. Sax. 2

B♭ T. Sax.

B♭ B. Sax.

B♭ Tpc. 1

B♭ Tpc. 2

B♭ Tpc. 3

F Hn. 1, 2

F Hn. 3, 4

Trp. 1

Trp. 2

Trp. 3

Euph.

Tuba

Dr. Sn.

Mall. Perc.

Trp.

Perc. 1

Perc. 2

Keyb. / Synth.

Solo Flute

Picc. (Fl. 3)

Fl. 1, 2

Oboe

B. Clar.

B. Clar. 1

B. Clar. 2

B. Clar. 3

B. A. Clar.

B. B. Clar.

Bassoon

B. A. Sax. 1

B. A. Sax. 2

B. T. Sax.

B. B. Sax.

B. Tpt. 1

B. Tpt. 2

B. Tpt. 3

F. Hrn. 1, 2

F. Hrn. 3, 4

Trp. 1

Trp. 2

Trp. 3

Euph.

Tuba

Db. Dr.

Mall. Perc.

Temp.

Perc. 1

Perc. 2

Keyb. / Synth.

14

15

16

17

0-2

Solo F Hn.

Picc. (Fl. 3)

Fl. 1, 2

Ob.

B♭ Clar.

B♭ Clar. 1

B♭ Clar. 2

B♭ Clar. 3

B♭ A. Clar.

B♭ B. Clar.

Bsn.

B♭ A. Sax. 1

B♭ A. Sax. 2

B♭ T. Sax.

B♭ B. Sax.

B♭ Tpt. 1

B♭ Tpt. 2

B♭ Tpt. 3

F Hn. 1, 2

F Hn. 3, 4

Tbn. 1

Tbn. 2

Tbn. 3

Euph.

Tuba

Ch. Bn.

Mall. Perc.

Temp.

Perc. 1

Perc. 2

Keyb. / Synch.

Detailed description of the musical score: This page contains a full orchestral score for 15 measures. The Solo F Horn part has a melodic line with a circled '0-2' above it. The Piccolo (Flute 3) part is mostly rests. The Flute 1 and 2 parts have rests. The Oboe part has rests. The Clarinet and Bassoon sections have rests. The Saxophone section has some activity, with the B♭ Bass Saxophone part showing a melodic line. The Trumpet and Trombone sections have rests. The Euphonium and Tuba parts have rests. The Chorus Bassoon part has rests. The Mallet Percussion part has a rhythmic pattern. The Snare Drum and other Percussion parts have rests. The Keyboard/Synthesizer part has rests.

54 Poco meno mosso

Solo Fl. Ho.

Picc. (Fl. 3)

Fl. 1, 2

Ob.

B♭ Clar.

B♭ Clar. 1

B♭ Clar. 2

B♭ Clar. 3

B♭ A. Clar.

B♭ B. Clar.

Bsn.

B♭ A. Sax. 1

B♭ A. Sax. 2

B♭ T. Sax.

B♭ B. Sax.

B♭ Tpt. 1

B♭ Tpt. 2

B♭ Tpt. 3

F Hn. 1, 2

F Hn. 3, 4

Tbn. 1

Tbn. 2

Tbn. 3

Euph.

Tuba

Db. B.

Mall. Perc.

Timp.

Perc. 1

Perc. 2

Keyb. / Synth.

Solo Fl. Ho.

Flac. (Fl. 3)

Fl. 1, 2

Ob.

B♭ Clar.

B♭ Clar. 1

B♭ Clar. 2

B♭ Clar. 3

B♭ A. Clar.

B♭ Bb. Clar.

Bsn.

B♭ A. Sax. 1

B♭ A. Sax. 2

B♭ T. Sax.

B♭ B. Sax.

B♭ Tpc. 1

B♭ Tpc. 2

B♭ Tpc. 3

F Ho. 1, 2

F Ho. 3, 4

Tbn. 1

Tbn. 2

Tbn. 3

Euph.

Tuba

Db. Bb.

Mall. Perc.

Timp.

Perc. 1

Perc. 2

Keyb. / Synch.

The musical score for page 17 consists of 28 staves. The instruments are listed on the left side of each staff. The score is written in a common time signature (C) and features a variety of musical notations, including eighth and sixteenth notes, rests, and dynamic markings. The instruments are: Solo Fl. Ho., Flac. (Fl. 3), Fl. 1, 2, Ob., B♭ Clar., B♭ Clar. 1, B♭ Clar. 2, B♭ Clar. 3, B♭ A. Clar., B♭ Bb. Clar., Bsn., B♭ A. Sax. 1, B♭ A. Sax. 2, B♭ T. Sax., B♭ B. Sax., B♭ Tpc. 1, B♭ Tpc. 2, B♭ Tpc. 3, F Ho. 1, 2, F Ho. 3, 4, Tbn. 1, Tbn. 2, Tbn. 3, Euph., Tuba, Db. Bb., Mall. Perc., Timp., Perc. 1, Perc. 2, and Keyb. / Synch. The score is divided into four measures, with measure numbers 37, 38, 39, and 40 indicated at the bottom of the page.

60

Solo Flute

Picc. (Fl. 3)

Fl. 1, 2

Oboe

B♭ Clar.

B♭ Clar. 1

B♭ Clar. 2

B♭ Clar. 3

B♭ A. Clar.

B♭ Bb. Clar.

Bassoon

B♭ A. Sax. 1

B♭ A. Sax. 2

B♭ T. Sax.

B♭ B. Sax.

61

B♭ Tpt. 1

B♭ Tpt. 2

B♭ Tpt. 3

Flute 1, 2

Flute 3, 4

Tbn. 1

Tbn. 2

Tbn. 3

Euph.

Tuba

Db. Bc.

Mull. Perc.

Timp.

Perc. 1

Perc. 2

Keyb. / Synth.

Solo Fl. Hn.

Picc. (Fl. 3)

Fl. 1, 2

Ob.

B♭ Clar.

B♭ Clar. 1

B♭ Clar. 2

B♭ Clar. 3

B♭ A. Clar.

B♭ Bn. Clar.

Bsn.

B♭ A. Sax. 1

B♭ A. Sax. 2

B♭ T. Sax.

B♭ B. Sax.

B♭ Tpt. 1

B♭ Tpt. 2

B♭ Tpt. 3

F Hn. 1, 2

F Hn. 3, 4

Tbn. 1

Tbn. 2

Tbn. 3

Euph.

Tuba

Db. Bn.

Mall. Perc.

Tom.

Perc. 1

Perc. 2

Keyb. / Synth.

63 64 65 66 67

Poco a poco rit.

Solo Fl. Ho.

Fl. (R. 3)

Fl. 1, 2

Ob.

B♭ Clar.

B♭ Clar. 1

B♭ Clar. 2

B♭ Clar. 3

B♭ A. Clar.

B♭ B. Clar.

Bsn.

B♭ A. Sax. 1

B♭ A. Sax. 2

B♭ T. Sax.

B♭ B. Sax.

Poco a poco rit.

B♭ Tpt. 1

B♭ Tpt. 2

B♭ Tpt. 3

F Hn. 1, 2

F Hn. 3, 4

Trp. 1

Trp. 2

Trp. 3

Euph.

Tuba

D. B.

Mall. Perc.

Temp.

Perc. 1

Perc. 2

Keyb. / Synch.

Poco

10 11 12 13 14 15 16 17 18

Wood Clones

20 Lento - Elegy (Free in time)

Solo Fl. Hn.

Picc. (Fl. 3) *fl. 3* *Join in time (Single slow and get faster, again and again...)*

Fl. 1, 2 *Join in time (Single slow and get faster, again and again...)*

Ob.

B♭ Clar.

B♭ Clar. 1 *Join in time (Single slow and get faster, again and again...)*

B♭ Clar. 2 *ppp* *Join in time (Single slow and get faster, again and again...)*

B♭ Clar. 3 *ppp* *Join in time (Single slow and get faster, again and again...)*

B♭ A. Clar. *ppp* *Join in time (Single slow and get faster, again and again...)*

B♭ B♭ Clar.

Sax.

B♭ A. Sax. 1 *ppp* *Join in time (Single slow and get faster, again and again...)*

B♭ A. Sax. 2 *ppp* *Join in time (Single slow and get faster, again and again...)*

B♭ T. Sax.

B♭ B. Sax.

21 Lento - Elegy (Free in time)

B♭ Tpt. 1

B♭ Tpt. 2

B♭ Tpt. 3

F Hn. 1, 2

F Hn. 3, 4

Tbn. 1

Tbn. 2

Tbn. 3

Euph.

Tuba

Db. Eb.

Mall. Perc. *Join in time*
Cym.

Timp.

Perc. 1 *Triangle*

Perc. 2 *Wood Chimes*

Keyb. / Synth. *Stop* *Flow*

Arrest

84

85

86

87

88

89

Solo Fltn.

Flc. (Fl. 3)

Fl. 1, 2

Oboe

B♭ Clar.

B♭ Clar. 1

B♭ Clar. 2

B♭ Clar. 3

B♭ A. Clar.

B♭ Bass Clar.

Bassoon

B♭ A. Sax. 1

B♭ A. Sax. 2

B♭ T. Sax.

B♭ B. Sax.

B♭ Tpt. 1

B♭ Tpt. 2

B♭ Tpt. 3

F Horn 1, 2

F Horn 3, 4

Trbn. 1

Trbn. 2

Trbn. 3

Euph.

Tuba

Db. Dr.

Mall. Perc.

Temp.

Perc. 1

Perc. 2

Keyb. / Synth.

Andal

rit.

Solo Fl. No. 1
Picc. (Fl. 3)
Fl. I, 2
Ob.
B♭ Clar.
B♭ Clar. 1
B♭ Clar. 2
B♭ Clar. 3
B♭ A. Clar.
B♭ Bb. Clar.
Bsn.
B♭ A. Sax. 1
B♭ A. Sax. 2
B♭ T. Sax.
B♭ B. Sax.
B♭ Tpt. 1
B♭ Tpt. 2
B♭ Tpt. 3
F Hn. 1, 2
F Hn. 3, 4
Trn. 1
Trn. 2
Trn. 3
Euph.
Tuba
Db. Bn.
Mall. Perc.
Timp.
Perc. 1
Perc. 2
Keyb. / Synth.

Andal *rit.* *Andal* *rit.*

And *Andante* *Allegro rit.*

Solo Fltn. Pic. (Fl. 3) Fl. 1, 2 Ob. Bb Clar. Bb Clar. 1 Bb Clar. 2 Bb Clar. 3 Bb A. Clar. Bb Bb Clar. Sax. Bb A. Sax. 1 Bb A. Sax. 2 Bb T. Sax. Bb B. Sax. Bb Tpt. 1 Bb Tpt. 2 Bb Tpt. 3 F Hn. 1, 2 F Hn. 3, 4 Tbn. 1 Tbn. 2 Tbn. 3 Euph. Tuba Db. Bb. Mdl. Perc. Timp. Perc. 1 Perc. 2 Keyb. / Synth.

95 96 97 98 99

100 Dolce (♩ = 60)

Solo F Hrn.

Picc. (Fl. 3)

Fl. 1, 2

Ob.

B♭ Clar.

B♭ Clar. 1

B♭ Clar. 2

B♭ Clar. 3

B♭ A. Clar.

B♭ Bb. Clar.

Bas.

B♭ A. Sax. 1

B♭ A. Sax. 2

B♭ T. Sax.

B♭ B. Sax.

100 Dolce (♩ = 60)

B♭ Tpc. 1

B♭ Tpc. 2

B♭ Tpc. 3

F Hrn. 1, 2

F Hrn. 3, 4

Tbn. 1

Tbn. 2

Tbn. 3

Euph.

Tuba

Db. Dr.

Mall. Perc.

Timp.

Perc. 1

Perc. 2

Keyb. / Synth.

104 *Espressivo*

Solo Fl. No. 1

Picc. (Fl. 3)

Fl. 1, 2

Ob.

B♭ Clar.

B♭ Clar. 1

B♭ Clar. 2

B♭ Clar. 3

B♭ A. Clar.

B♭ Bb. Clar.

Bsn.

B♭ A. Sax. 1

B♭ A. Sax. 2

B♭ T. Sax.

B♭ B. Sax.

104 *Espressivo*

B♭ Tpt. 1

B♭ Tpt. 2

B♭ Tpt. 3

F Hrn. 1, 2

F Hrn. 3, 4

Trn. 1

Trn. 2

Trn. 3

Euph.

Tuba

Db. Bb.

Mal. Perc.

Timp.

Perc. 1

Perc. 2

Keyb. / Synth.

Solo F Hn.
 Picc. (Fl. 3)
 Fl. 1, 2
 Ob.
 B♭ Clar.
 B♭ Clar. 1
 B♭ Clar. 2
 B♭ Clar. 3
 B♭ A. Clar.
 B♭ B. Clar.
 Bsn.
 B♭ A. Sax. 1
 B♭ A. Sax. 2
 B♭ T. Sax.
 B♭ B. Sax.
 B♭ Tpt. 1
 B♭ Tpt. 2
 B♭ Tpt. 3
 F Hn. 1, 2
 F Hn. 3, 4
 Tbn. 1
 Tbn. 2
 Tbn. 3
 Euph.
 Tuba
 Db. Bn.
 Mall. Perc.
 Timp.
 Perc. 1
 Perc. 2
 Keyb. / Synth.

Sub F.Hn.
 Perc. (Pl. 3)
 Fl. 1, 2
 Ob.
 B♭ Clar.
 B♭ Clar. 1
 B♭ Clar. 2
 B♭ Clar. 3
 B♭ A. Clar.
 B♭ Bb. Clar.
 Sax.
 B♭ A. Sax. 1
 B♭ A. Sax. 2
 B♭ T. Sax.
 B♭ B. Sax.
 B♭ Tpt. 1
 B♭ Tpt. 2
 B♭ Tpt. 3
 F.Hn. 1, 2
 F.Hn. 3, 4
 Trm. 1
 Trm. 2
 Trm. 3
 Euph.
 Tuba
 Db. Bb.
 Malf. Perc.
 Timp.
 Perc. 1
 Perc. 2
 Keyb. / Synth.

Solo Fltn.

Picc. (Fl. 3)

Fl. 1, 2

Ob.

B♭ Clar.

B♭ Clar. 1

B♭ Clar. 2

B♭ Clar. 3

B♭ A. Clar.

B♭ B. Clar.

Bsn.

B♭ A. Sax. 1

B♭ A. Sax. 2

B♭ T. Sax.

B♭ B. Sax.

B♭ Tpc. 1

B♭ Tpc. 2

B♭ Tpc. 3

F Hn. 1, 2

F Hn. 3, 4

Tbn. 1

Tbn. 2

Tbn. 3

Euph.

Tuba

Db. Bc.

Mall. Perc.

Temp.

Perc. 1

Perc. 2

Keyb. / Synth.

124 Allegro (♩ = 120)

Multisynth patch selected

C-bass

Epiet

Solo Fl Ho.

Picc. (Fl. 3)

Fl. 1, 2

Ob.

E♭ Clar.

B♭ Clar. 1

B♭ Clar. 2

B♭ Clar. 3

E♭ A. Clar.

B♭ B♭ Clar.

Bsn.

E♭ A. Sax. 1

E♭ A. Sax. 2

B♭ T. Sax.

B♭ B. Sax.

E♭ Tpt. 1

B♭ Tpt. 2

B♭ Tpt. 3

F Ho. 1, 2

F Ho. 3, 4

Trp. 1

Trp. 2

Trp. 3

Euph.

Tuba

Dr. B♭

Mall. Perc.

Temp.

Perc. 1

Perc. 2

Keyb. / Synth.

Solo Flute

Picc. (Fl. 3)

Fl. 1, 2

Ob.

B♭ Clar.

B♭ Clar. 1

B♭ Clar. 2

B♭ Clar. 3

B♭ A. Clar.

B♭ B♭ Clar.

Bsn.

B♭ A. Sax. 1

B♭ A. Sax. 2

B♭ T. Sax.

B♭ B. Sax.

B♭ Tpt. 1

B♭ Tpt. 2

B♭ Tpt. 3

Fln. 1, 2

Fln. 3, 4

Tbn. 1

Tbn. 2

Tbn. 3

Euph.

Tuba

Db. Bk.

Mall. Perc.

Temp.

Perc. 1

Perc. 2

Keyb. / Synth.

Solo F. Ho.

Perc. (Fl. 3)

Fl. 1, 2

Ob.

B♭ Clar.

B♭ Clar. 1

B♭ Clar. 2

B♭ Clar. 3

B♭ A. Clar.

B♭ B. Clar.

Sax.

B♭ A. Sax. 1

B♭ A. Sax. 2

B♭ T. Sax.

B♭ B. Sax.

B♭ Tpc. 1

B♭ Tpc. 2

B♭ Tpc. 3

F. Ho. 1, 2

F. Ho. 3, 4

Tbn. 1

Tbn. 2

Tbn. 3

Euph.

Tuba

Dr. Bc.

Mall. Perc.

Timp.

Perc. 1

Perc. 2

Keyb. / Synth.

140

Solo Fltn.

Picc. (Fl. 3)

Fl. 1, 2

Ob.

B♭ Clar.

B♭ Clar. 1

B♭ Clar. 2

B♭ Clar. 3

B♭ A. Clar.

B♭ B♭ Clar.

Bass.

B♭ A. Sax. 1

B♭ A. Sax. 2

B♭ T. Sax.

B♭ B. Sax.

140

B♭ Tpc. 1

B♭ Tpc. 2

B♭ Tpc. 3

F Hrn. 1, 2

F Hrn. 3, 4

Trn. 1

Trn. 2

Trn. 3

Euph.

Tuba

Dr. B♭

Mall. Perc.

Temp.

Perc. 1

Perc. 2

Keyb. / Synth.

mf *Synthesizer Solo - Chorus (cont.)*

140 141 142 143

Solo Flute

Perc. (Fl. 3)

Fl. 1, 2

B♭ Clar.

Clar. 1

Clar. 2

Clar. 3

Sax. A. Clar.

Sax. B♭ Clar.

Sax.

Sax. A. Sec. 1

Sax. A. Sec. 2

Sax. T. Sec.

Sax. B. Sec.

Trp. 1

Trp. 2

Trp. 3

Hr. 1, 2

Hr. 3, 4

Tbn. 1

Tbn. 2

Tbn. 3

Euph.

Tuba

Db. Bc.

Mall. Perc.

Temp.

Perc. 1

Perc. 2

Keyb. / Synth.

144 145 146 147 148

Solo Flute

Picc. (Fl. 3)

Fl. 1, 2

Ob.

B♭ Clar.

B♭ Clar. 1.

B♭ Clar. 2

B♭ Clar. 3

B♭ A. Clar.

B♭ B♭ Clar.

Bon.

B♭ A. Sax. 1

B♭ A. Sax. 2

B♭ T. Sax.

B♭ S. Sax.

B♭ Trp. 1

B♭ Trp. 2

B♭ Trp. 3

F Hn. 1, 2

F Hn. 3, 4

Tbn. 1

Tbn. 2

Tbn. 3

Euph.

Tuba

Db. B♭

Mall. Perc.

Temp.

Perc. 1

Perc. 2

Keyb. / Synth.

Solo F Hrn.

Picc. (Fl. 3)

Fl. 1, 2

Ob.

B♭ Clar.

B♭ Clar. 1

B♭ Clar. 2

B♭ Clar. 3

B♭ A. Clar.

B♭ Bb. Clar.

Bsn.

B♭ A. Sax. 1

B♭ A. Sax. 2

B♭ T. Sax.

B♭ B. Sax.

B♭ Tpt. 1

B♭ Tpt. 2

B♭ Tpt. 3

F Hrn. 1, 2

F Hrn. 3, 4

Tbn. 1

Tbn. 2

Tbn. 3

Euph.

Tuba

Db. Bb.

Mall. Perc.

Timp.

Perc. 1

Perc. 2

Keyb. / Synth.

156

157

158

159

D=B

Solo Flute

Picc. (Fl. 3)

Fl. 1, 2

Ob.

B♭ Clar.

B♭ Clar. 1

B♭ Clar. 2

B♭ Clar. 3

B♭ A. Clar.

B♭ B♭ Clar.

Bsn.

B♭ A. Sax. 1

B♭ A. Sax. 2

B♭ T. Sax.

B♭ B. Sax.

B♭ Tpt. 1

B♭ Tpt. 2

B♭ Tpt. 3

F Hn. 1, 2

F Hn. 3, 4

Trp. 1

Trp. 2

Trp. 3

Euph.

Tuba

Db. Dr.

Mull. Perc.

Temp.

Perc. 1

Perc. 2

Keyb. / Synth.

D=B

The musical score for page 38 is arranged in a standard orchestral format. It begins with a Solo Flute part on the top staff, which includes a melodic line with some slurs and a dynamic marking of *mf*. Below this are staves for Piccolo (Flute 3), Flutes 1 and 2, Oboe, and three B-flat Clarinets. The woodwind section continues with B-flat Alto Clarinet, B-flat Bass Clarinet, Bassoon, and three B-flat Saxophones (Alto, Tenor, Bass). The brass section includes three B-flat Trumpets, three Trombones (1, 2, 3), three French Horns (1, 2, 3, 4), Euphonium, Tuba, and Double Bass. The percussion section consists of Muffled Percussion, Tom-toms, and two sets of Percussion. The Keyboard/Synth part is at the bottom. A key signature change to D major (D=B) is indicated above the Solo Flute staff and below the Bass Saxophone staff. The score is divided into measures by vertical bar lines, with some measures containing rests for certain instruments.

163 Poco meno mosso

Solo F Hn.

Cor. (Fl. 3)

Fl. 1, 2

Ob.

B♭ Clar.

B♭ Clar. 1

B♭ Clar. 2

B♭ Clar. 3

B♭ A. Clar.

B♭ Bb. Clar.

Bsn.

B♭ A. Sax. 1

B♭ A. Sax. 2

B♭ T. Sax.

B♭ B. Sax.

165 Poco meno mosso

B♭ Tpc. 1

B♭ Tpc. 2

B♭ Tpc. 3

F Hn. 1, 2

F Hn. 3, 4

Tbn. 1

Tbn. 2

Tbn. 3

Euph.

Tuba

D♭. Bb.

Mall. Perc.

Timp.

Perc. 1

Perc. 2

Keyb. / Synch.

Solo Flute

Picc. (Fl. 3)

Fl. 1, 2

Oboe

B♭ Clar.

B♭ Clar. 1

B♭ Clar. 2

B♭ Clar. 3

B♭ A. Clar.

B♭ B♭ Clar.

Bassoon

B♭ A. Sax. 1

B♭ A. Sax. 2

B♭ T. Sax.

B♭ B. Sax.

B♭ Tpc. 1

B♭ Tpc. 2

B♭ Tpc. 3

F Hrn. 1, 2

F Hrn. 3, 4

Tbn. 1

Tbn. 2

Tbn. 3

Euph.

Tuba

Db. Bn.

Mall. Perc.

Temp.

Perc. 1

Perc. 2

Keyb. / Synth.

108 109 110 111

177

Solo Fl. Hr.
 Picc. (Fl. 3)
 Fl. 1, 2
 Fl.
 Clar.
 Clar. 1
 Clar. 2
 Clar. 3
 A. Clar.
 Bb. Clar.
 Sax.
 A. Sax. 1
 A. Sax. 2
 T. Sax.
 B. Sax.
 Tpc. 1
 Tpc. 2
 Tpc. 3
 Hrn. 1, 2
 F. Hrn. 3, 4
 Trp. 1
 Trp. 2
 Trp. 3
 Euph.
 Tuba
 S. Bc.
 Malt. Perc.
 Cym.
 Trc. 1
 Trc. 2
 Trb. / Synch.

Brilliant - stringada

Solo F Hn.

Picc. (Fl. 3)

Fl. 1, 2

Oboe

B♭ Clar.

B♭ Clar. 1

B♭ Clar. 2

B♭ Clar. 3

B♭ A. Clar.

B♭ B♭ Clar.

Bassoon

B♭ A. Sax. 1

B♭ A. Sax. 2

B♭ T. Sax.

B♭ B. Sax.

B♭ Tpt. 1

B♭ Tpt. 2

B♭ Tpt. 3

F Hn. 1, 2

F Hn. 3, 4

Trp. 1

Trp. 2

Trp. 3

Euph.

Tuba

D♭ B♭

Mall. Perc.

Temp.

Perc. 1

Perc. 2

Kybk. / Dyab.

Brilliant - stringada

Solo Flute
 Picc. (Fl. 3)
 Fl. 1, 2
 Ob.
 B♭ Clar.
 ♯ Clar. 1
 B♭ Clar. 2
 ♯ Clar. 3
 B♭ A. Clar.
 B♭ B. Clar.
 Bas.
 B♭ A. Sax. 1
 ♯ A. Sax. 2
 B♭ T. Sax.
 ♯ B. Sax.
 ♯ Tpt. 1
 ♯ Tpt. 2
 B♭ Tpt. 3
 Hn. 1, 2
 F Hn. 3, 4
 Tbn. 1
 Tbn. 2
 Tbn. 3
 euph.
 tuba
 Db. Bc.
 Mallet Perc.
 Timp.
 Perc. 1
 Perc. 2
 Cymb. / Gong.

180 181 182 183

33

Rossini

1^o Corno in FA

La Gazza Ladra = Sinfonia

Maestoso
Mozzale

Handwritten notes: *in FA* and a circled *3* with a line underneath it.

Musical score for the first horn part. It consists of ten staves of music. The notation includes various rhythmic values, slurs, and dynamic markings such as *ff*, *p*, *pp*, and *ppp*. There are also markings for triplets and accents. The key signature has one flat (F major or D minor).



V.P.

Musical staff with notes and dynamics: *ppp* and *ff*. Includes fingerings 1, 2, 3 and a slur.

Musical staff with tempo marking *Allegro* and *Contralto*. Includes a dynamic marking *p*.

Musical staff with rhythmic patterns and slurs.

Musical staff with dynamics *ff* and *p*. Includes a fingering (2) 7.

Musical staff with rhythmic patterns and slurs.

Musical staff with rhythmic patterns and slurs.

Musical staff with dynamics *pp* and *crescendo*. Includes a fingering (3).

Musical staff with dynamics *cresc* and *ff*.

Musical staff with notes and slurs.

Musical staff with notes and slurs. Includes a fingering (4).

Musical staff with notes and slurs. Includes fingerings 1, 2, 3.

Musical staff with notes and slurs. Includes a dynamic marking *ff* and a fingering (5). Includes the text *Vuota* and *DAI IL CERNO*.

12
14/4

Handwritten musical notation on a single staff, featuring eighth notes and triplets.

Handwritten musical notation on a single staff, including a measure rest and dynamic marking *pp*.

Handwritten musical notation on a single staff, featuring eighth notes and triplets.

Handwritten musical notation on a single staff, including measure rests and triplets.

Handwritten musical notation on a single staff, including measure rests and triplets.

Handwritten musical notation on a single staff, featuring measure rests numbered 1 through 7.

Handwritten musical notation on a single staff, including measure rests and dynamic markings *pp* and *ff*.

Handwritten musical notation on a single staff, including measure rests and dynamic markings *p* and *cresc*.

Handwritten musical notation on a single staff, featuring eighth notes and dynamic markings *p* and *cresc*.

Handwritten musical notation on a single staff, including measure rests and dynamic marking *ff*.

Handwritten musical notation on a single staff, including measure rests and dynamic markings *pp* and *cresc*.

Handwritten musical notation on a single staff, including measure rests and dynamic markings *pp* and *cresc*.

Il Barbiere di Siviglia

Sinfonia

Musica: **G. Rossini**

Elab: **R. Granata**

Andante Maestoso

Corno in Fa
1

Musical score for Corno in Fa, measures 1-90. The score is written in 4/4 time and includes dynamic markings such as *ff*, *pp*, *f*, *mf*, and *sf*. It features various articulations like accents and slurs, and includes first and second endings. The tempo changes from Andante Maestoso to Allegro con brio at measure 25. Rehearsal marks 1 through 7 are present throughout the score.

Il Barbiere di Siviglia - Corno 1

[91-102] **8** **12**
p dolce

108 [112-114] **3**

115 **9**
pp

121 **10**
pp

126
cresc. a poco a poco

131
rinf. sf

136 **11**
sf ff

141
sf sf sf sf ff sf sf sf sf sf sf sf sf

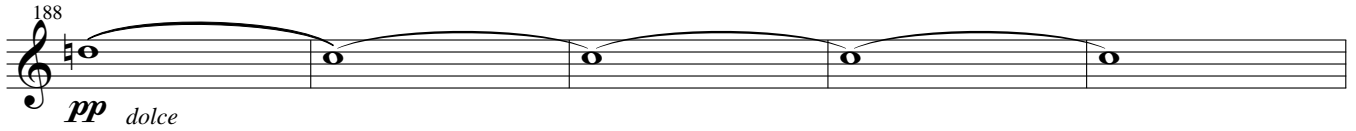
148 **12** [151-166] **16** [167-176] **10**
sf sf sf sf sf sf sf sf

177 **14**
pp dolce

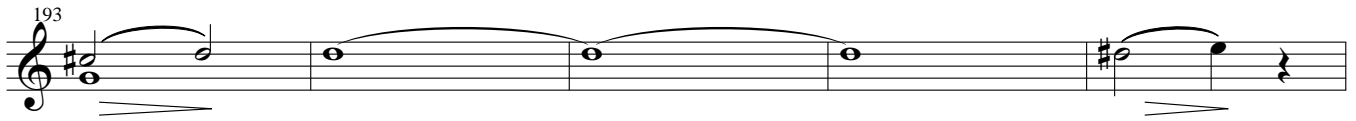
182 [186-187] **2**

Il Barbiere di Siviglia - Corno 1

188 *pp dolce*



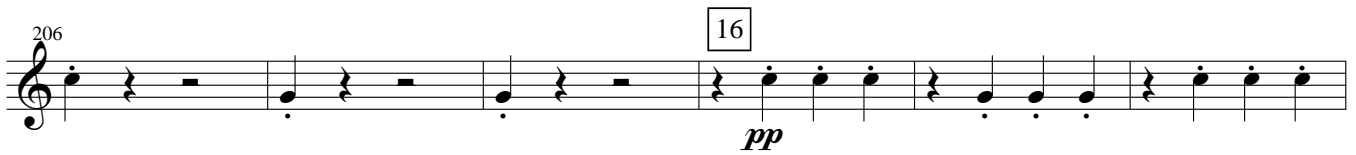
193



[198-199] **15** *pp*



206 **16** *pp*



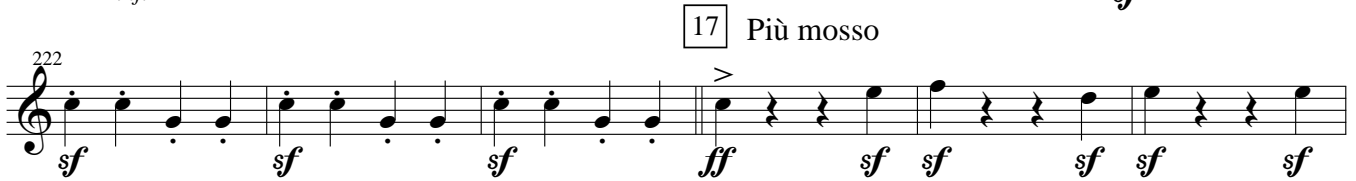
212 *cresc. a poco a poco*



217 *rinf.* *sf*



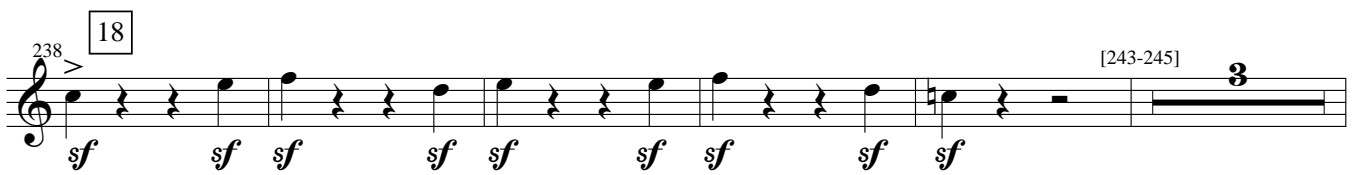
17 Più mosso *sf* *ff* *sf* *sf* *sf* *sf* *sf*



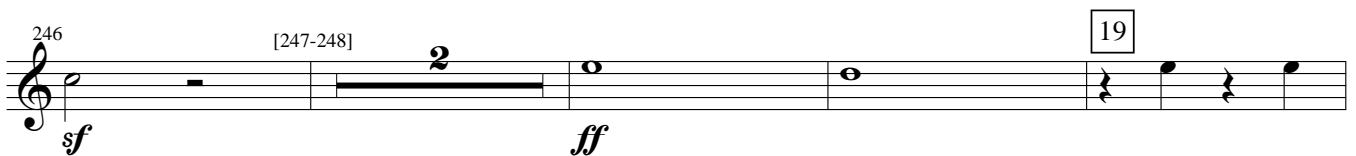
228 [230-232] **3** [234-235] **2** *sf* *ff*



18 [243-245] **3** *sf* *sf* *sf* *sf* *sf* *sf* *sf* *sf* *sf* *sf*



246 [247-248] **2** **19** *sf* *ff*



252



258



n. 727

In celebration of the 50th Anniversary of the United States Army Field Band, Washington D.C.

FIESTA!

1st F Horn

3

1st F Horn

PHILIP SPARKE

Vivace (♩ = 160)

1st F Horn part, measures 1-42. The score begins with a *ff* dynamic and a *ff marc.* section. It features several dynamic changes: *sfp* at measure 5, *ff* at measure 9, *f* at measure 14, *ff* at measure 19, *f* at measure 24, *ff* at measure 29, and *ff* at measure 33. Markings A, B, C, D, E, and F are placed above the staff at measures 9, 14, 19, 29, 33, and 42 respectively. The piece is in 4/4 time and includes various rhythmic patterns and articulations.

1st F Horn part, measures 47-109. This section continues the piece with dynamics ranging from *ffp* to *mp*. Markings G, H, I, J, K, L, M, and N are placed above the staff at measures 47, 56, 63, 67, 75, 83, 89, 96, and 102 respectively. The score includes complex rhythmic patterns, including triplets and multi-measure rests, and changes in time signature.

118 O

mf *f*

123 *Andante con moto* (♩ = 80)

mp

127 P

mf *sfz*

132 *poco rall.* *a tempo* *rall.*

mp *mp* *f*

137 Q *Vivace* (♩ = 160)

pp (Hn. 3) *f*

148 S

ff *f*

153

157 T

p *f*

163 U

ff

168 V

172

177 W

182 X

ffp *mf*

191

p

198

202 Z

mp

205

210 AA

mf *mf* *mp* *mf*

219 BB

mf *mf*

225 CC

f

231 DD

237

cresc.

243 EE

ff

248